



www.unitedpebs.com

In the struggle to excel in our ever changing business world, it seems that more and more, the needs of you, the Consumer, continue to fall through the cracks of the busy streets of business. The Solidarity of a firm hand shake has been replaced with the expedience of a computer program. The importance of face to face , voice to voice communication has taken a back seat to mass e-mail and automated recordings. We, at UNITED PEBS understand the importance of progressions and technological growth, however we deal in “personal relationships” , not wireless transaction.

All business is 'people-business', no matter how you slice it. From our teams on the line to our service organisation, caring about the customer and doing the job 'right' is the guiding principle. Our sales team has dedicated themselves towards ensuring your needs will be met with a quality product, impeccable service and competitive pricing through out the years.

About Us

“United” is a leader in bringing together technology and engineering to provide solutions to customers. It is widely recognized as one of the best managed industrial unit. It is pretty young (created in 2005) and led by professionals from building and construction industry. United always believed in a committed organization and targeting long term success. United has created a powerful competitive advantage with a strong balance sheet . At united, managers enjoy autonomy to perform at their best. At United, we improve productivity only through people. We enable organizational learning and we demand, passion for greatness. We drive success through intense passion and organizational learning.

The Credo: CUSTOMER SERVICE WITHOUT COMPROMISE

Our Mission

To create a customer focus and ensure, this is present from top to bottom.

Make our company regard continuous change as a way of life and not as an exception.

Exercise leadership through deep understanding, coaching, empowering and a willingness to intervene when necessary. Getting people done through work (we would like to lead people).

To satisfy customers and having customer owning focus, rather than product owning focus.

We treat customers as appreciating assets.

Our Vision

"To organize and operate the company to deliver winning results and to become a market leader and to be good corporate citizen and make the company the most preferred employer"

United Brand Promise

At United, technology and engineering come together to create solutions for the benefit of our customers in terms of cost saving, time saving and world class quality.

Values & Beliefs

We insist on integrity in everything we do.

We have zero tolerance for misconduct or malfeasance.

We believe in consistent high performance through effective management, day to day, week to week, quarter to quarter, year to year.

We believe to achieve winning results over the long term, we must consistently generate high profits. We believe we can do this if our people are fully committed, focussed, disciplined and willing to work hard.

We believe that finding new ways to add value for customers in the path to success.

We must be the industry leader in our key markets, The key to market leadership is technology leadership.

Pre-Engineered Building Systems

Facilities & Products:

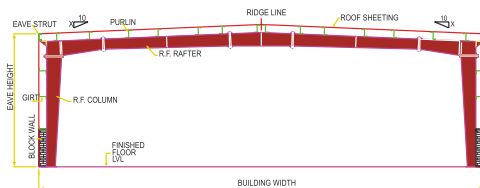
Pre Engineered Buildings from design to completion.

Our dedicated and well trained technicians monitor our process at every stage including raw material selection from leading steel companies and Quality check at every stage of production to ensure our finished supplies are confirming as per industry standards.

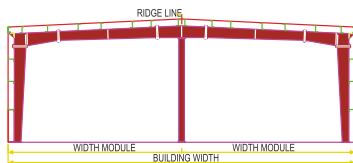
We have the installed capacity of around 5,000 MT steel per year to produce Primary Structural Members. The plant is fully equipped with state-of-the-art latest machinery such as High-end CNC Plasma Profile Cutting Machine with Hyper therm Power source, H -Beam Automatic Welding line with Lincoln Electric SAW, MIG Welding , Drilling , Punching machines etc.,

Primary Members

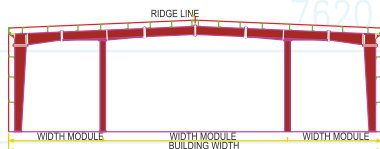
CLEAR SPAN



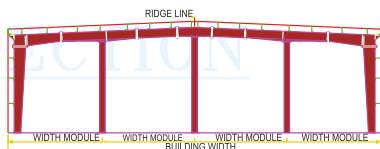
BEAM COLUMN - 1* (BC1)



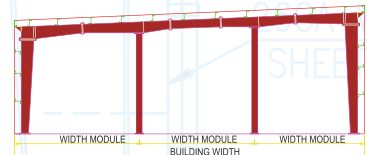
BEAM COLUMN - 2* (BC2)



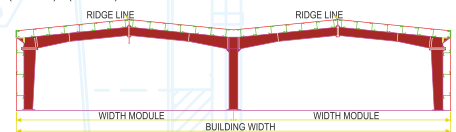
BEAM COLUMN - 3* (BC3) Note: *Denotes number of columns



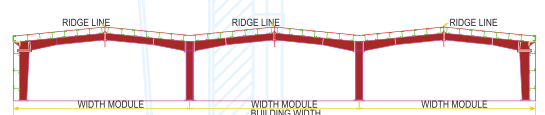
SINGLE SLOPE BC2



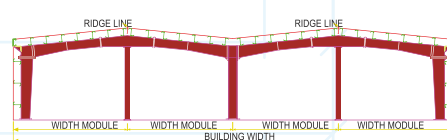
MULTI GABLE - 2 (MG-2*) - (CS+CS)



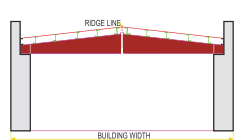
MULTI GABLE - 3 (MG-3*) - (CS+CS+CS) Note: *Denotes number of Gables



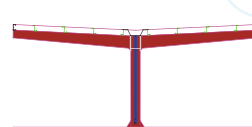
MULTI GABLE - 2 (BC1+BC1)



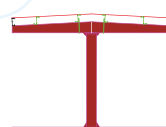
ROOF SYSTEM



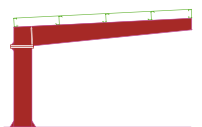
Y - CANOPY



T - CANOPY



L - CANOPY



Advantages

Durable and Economical
Flexible and Time saving
Architectural versatility
Earthquake Resistant

Applications

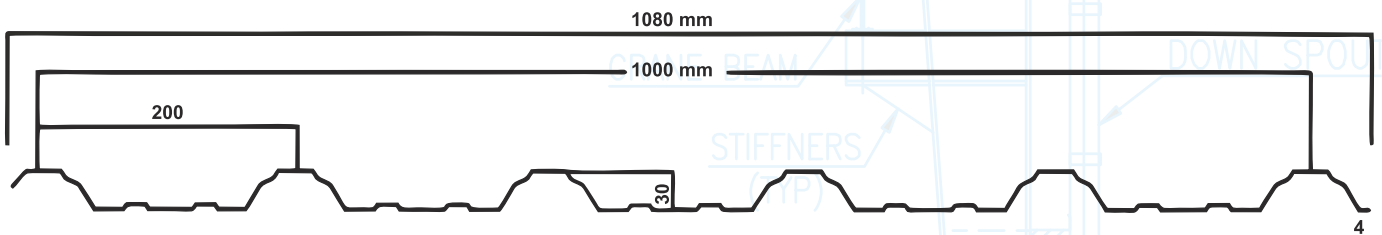
Industrial Sheds
Commercial Buildings
Sports Facilities
Aircraft Hangers
Warehouses and Storage
Metro and Bus Terminals

Secondary Members

Cold Roll Formed C And Z Sections With Online Pre Punching .

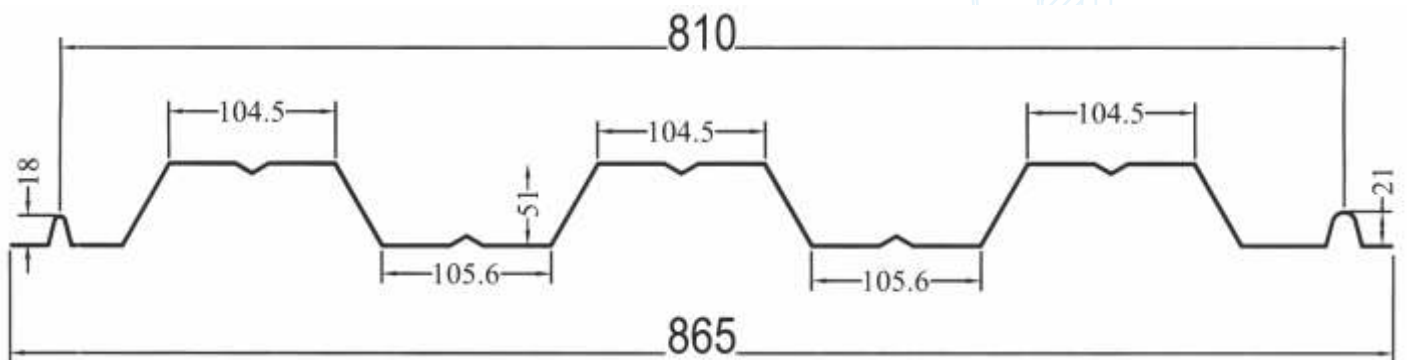


Roofing & Cladding Sheets



Deck Sheets

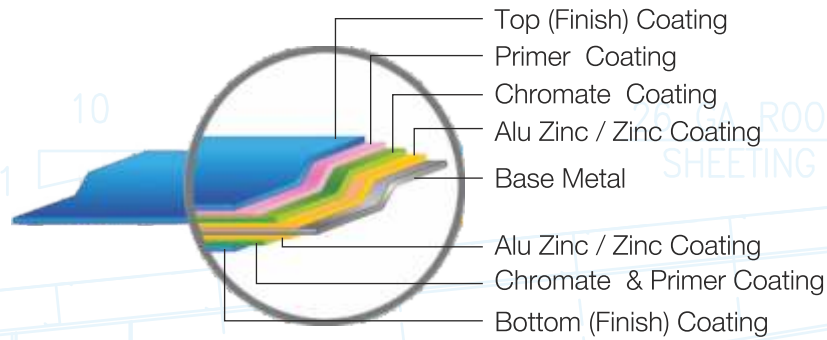
Steel decking profile is used as composite floor system or permanent form work. It binds with concrete slab and together forms a part of the floor structure.



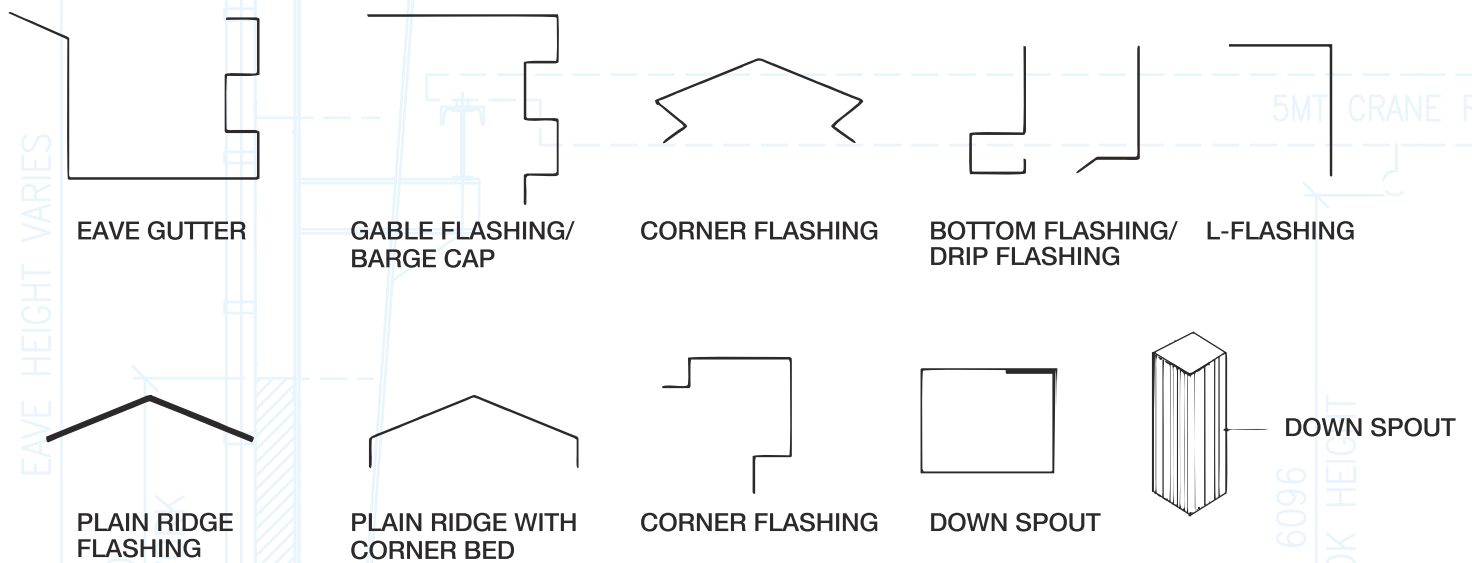
ADVANTAGES

- Light weight- Reduces concrete floor weight by almost 50%.
- Multi use – For mezzanines, walkways, platforms etc.,
- Time saving – Easy installation

Structure of Pre-Painted Steel Sheet



Accessories:



Nut's Bolt's



Fixed louver



Window



Roof Skylight



Wall light



Insulation

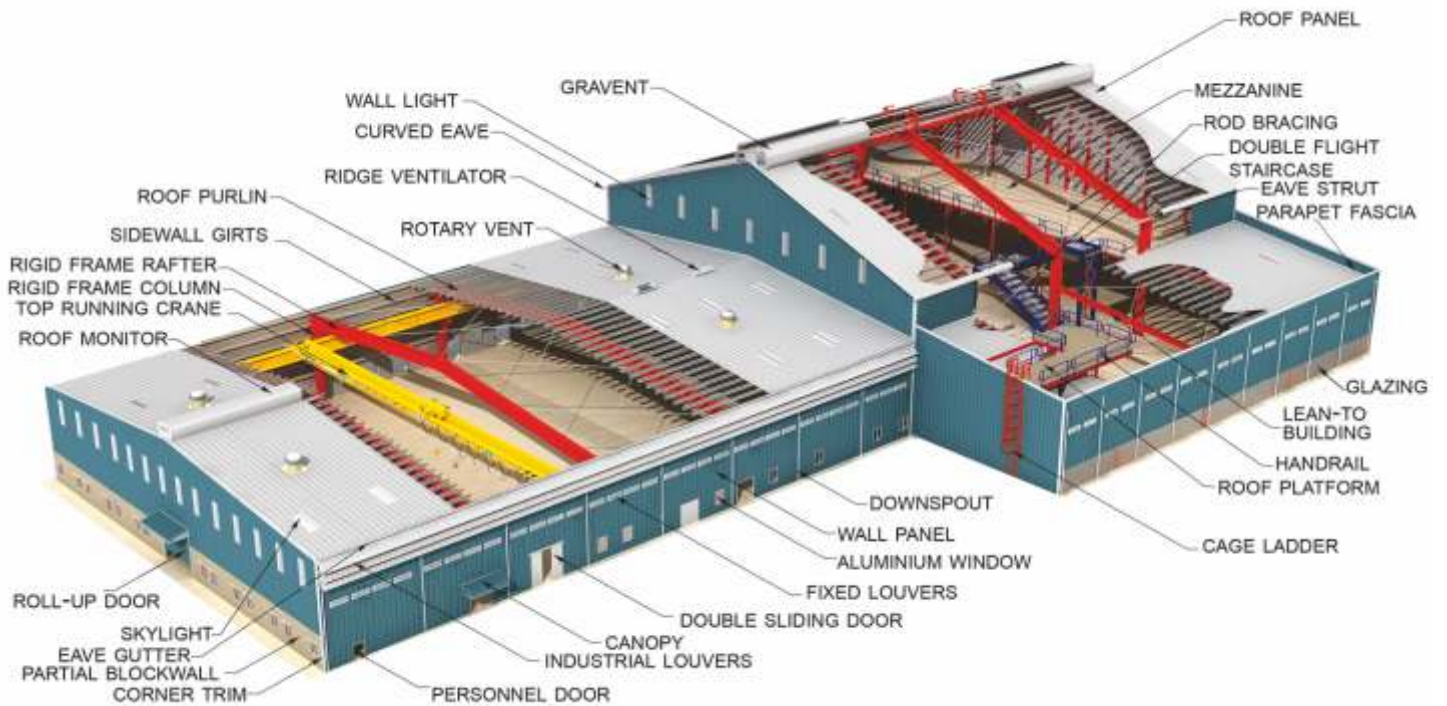


Ridge ventilator



Turbo ventilators

TYPICAL PRE-ENGINEERED STEEL BUILDING



UNITED PEB SOLUTIONS PVT LTD

Plot No. 155/A, Sy. No. 172, IDA Bollaram, Jinnaram Mandal, Medak Dist., Telangana - 502325.

Ph : +91 40 40210101 / 0202. Fax : +91 40 40210303.

Mobile : +91 9949944554, +91 9849011559

e-mail : info@unitedpebs.com